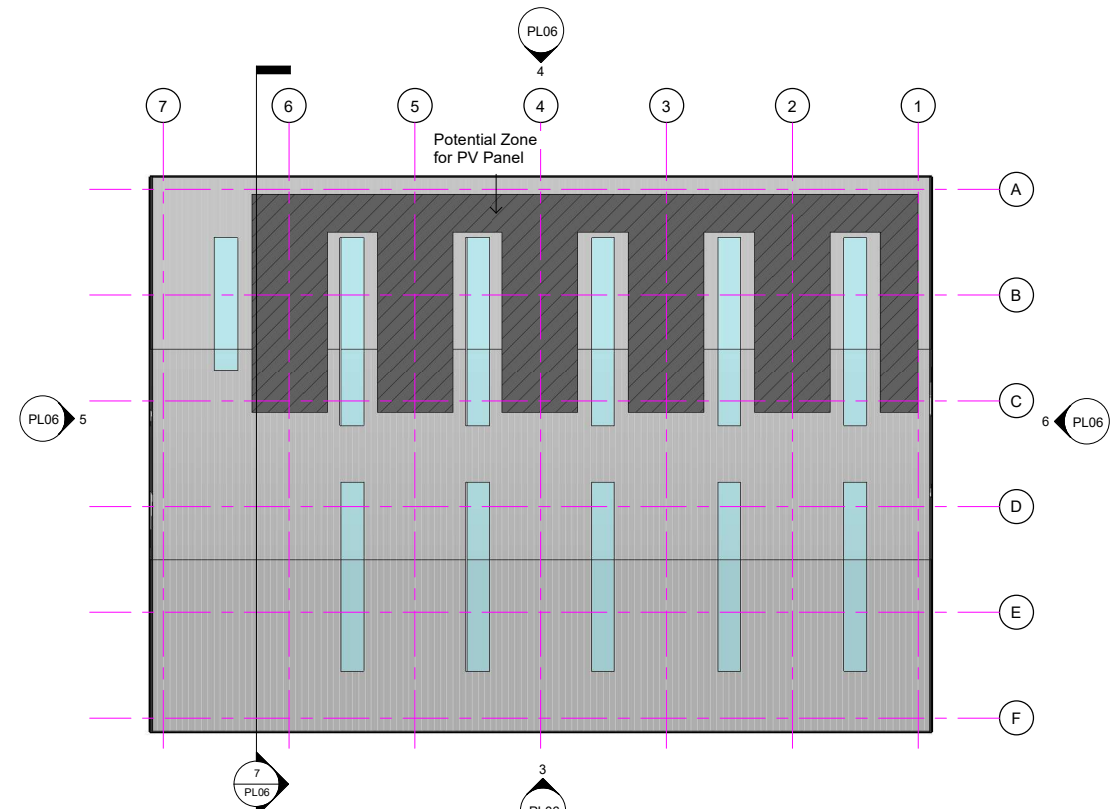


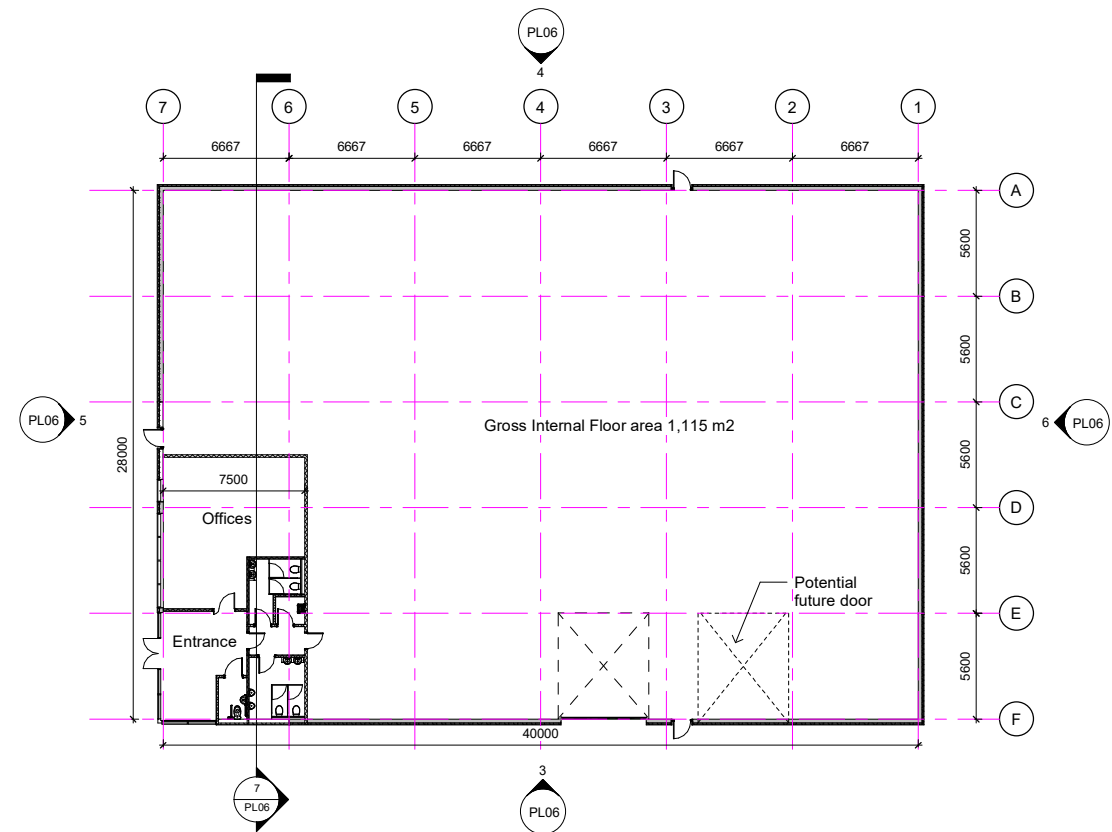
**MATERIALS KEY**

1. **CA trapezoidal profile built up roof cladding**  
Colour - Goosewing Grey (RAL 7038)
2. **Eaves/Verges, feature flashing**  
Colour - Anthracite (RAL 7016)
3. **Feature flashing (Office Entrance) cladding laid horizontally**  
Colour - Sapphire (RAL 5003)
4. **CA trapezoidal profile built up cladding laid horizontally**  
Colour - Merlin Grey (RAL 180 40 05)
5. **CA trapezoidal profile built up cladding laid vertically**  
Colour - Gull Grey (RAL 240 80 05)  
Colour - Cream (RAL 1015)
6. **Level Access Doors/Fire Escape Doors**  
Colour - Sapphire (RAL 5003)
7. **Curtain walling/windows ppc aluminium**  
Colour - Anthracite (RAL 7016)
8. **Glass Canopy over office entrance**

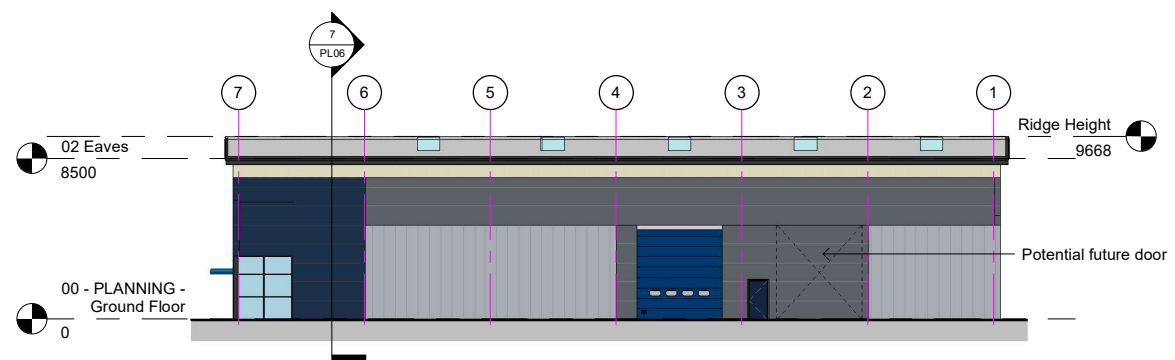


**2 02 - PLANNING - Roof Plan**  
1 : 200

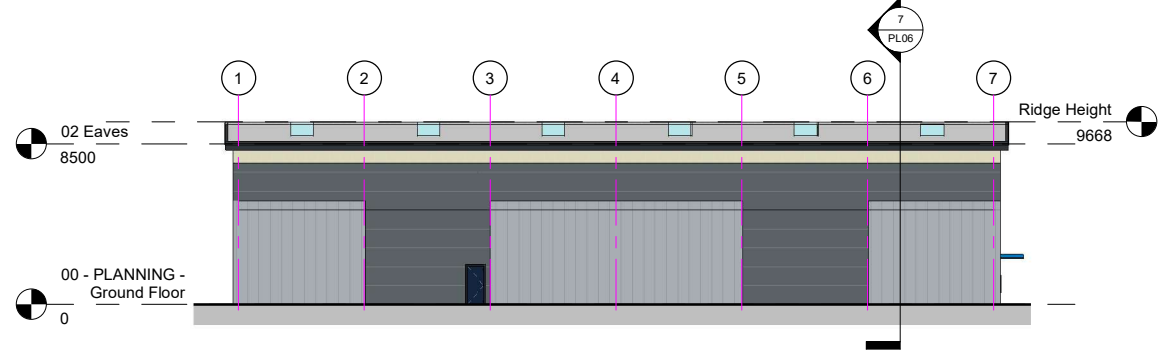
Rooflights to cover 10% of total floor area.



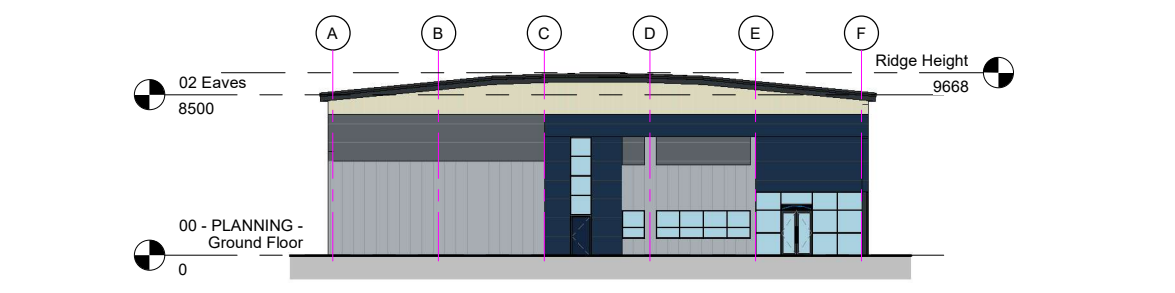
**1 00 - PLANNING - Ground Floor**  
1 : 200



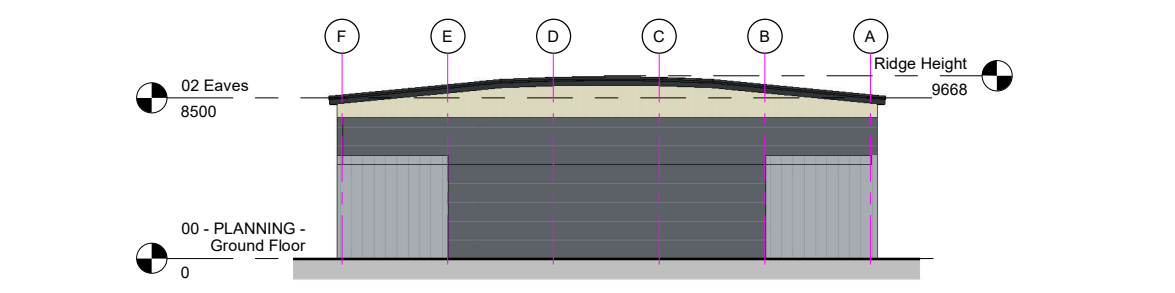
**3 PLANNING - Front Elevation**  
1 : 200



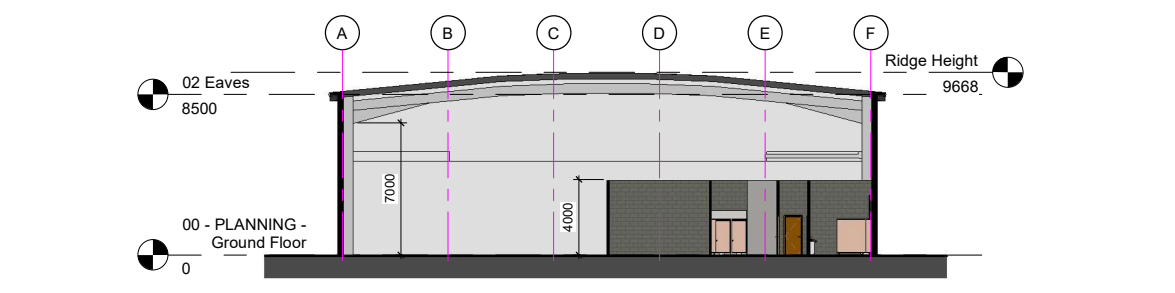
**4 PLANNING - Rear Elevation**  
1 : 200



**5 PLANNING - Side Elevation (1)**  
1 : 200



**6 PLANNING - Side Elevation (2)**  
1 : 200



**7 PLANNING - Section 1**  
1 : 200

Rev/Date	Note	Revised	Checked
B 26.01.22	Roof pitch, Roof Radius and eaves level updated	ADS	IAC
A 13.01.22	Entrance glazing reduced, Ridge height & PV Panel shown	ADS	IAC
Status			
PLANNING			
Project			
Panther Court, Drum Industrial Estate, Birtley			
Drawing Title			
Unit 2 Proposed Plans, Elevations & Section			
Drawing Size A1			
Job No.	Drawing No.	Scale	Revision
19-020	PL06	1 : 200	B
Drawn by	Reviewed by	Date	
ADS	IAC	10/21	