

Materials Legend:

- A - Vertically Laid Profiled Metal Wall Cladding to Warehouse, colour: RAL 9006 (Metallic Silver) H31/120A or H31/124
- B - Polyester Powder Coated Aluminium Windows with Opening Lights, colour: RAL 7016 (Anthracite) H11/110
- C - Profiled Metal Roofing with Rooflights, colour: RAL 080 70 05 (Goosewing Grey) H31/125
- D - Polyester Powder Coated Aluminium Curtain Walling with Opening Lights, colour: RAL 7016 (Anthracite) H11/110
- E - Polyester Powder Coated Aluminium SIGNAGE, future install by tenant
- F - Metal Composite Cladding Panels to Office, colour: RAL 9010 (White) H43/120A
- G - External Sectional Overhead Doors, colour: RAL 7016 (Anthracite) L20/615
- H - Insulated Spandrel Panel, colour: RAL 7016 (Anthracite) H11/110
- J - External Steel Doors, colour: RAL 7016 (Anthracite) L20/480A
- K - Automatic Opening Glazed Entrance Doors, colour: RAL 7016 (Anthracite) H11/135A
- L - Smooth Facing Engineering Brickwork F10/110
- M - Bullnose Flashing to eaves, colour: RAL 7016 (Anthracite) H31/125
- N - Aluminium Flashing to base of cladding and cladding junctions, colour: RAL 9006 (Metallic Silver) H43/120A OR H31/120A
- P - Aluminium Flashing around openings, colour: RAL 7016 (Anthracite) H31/120A, H31/124 or H43/120A
- Q - Roof mounted photovoltaics as M&E Engineer's drawings with associated walkways and mansafe systems
- R - True-line aluminium gutter to eaves, colour: RAL 7016 (Anthracite) H31/125

NOTE:

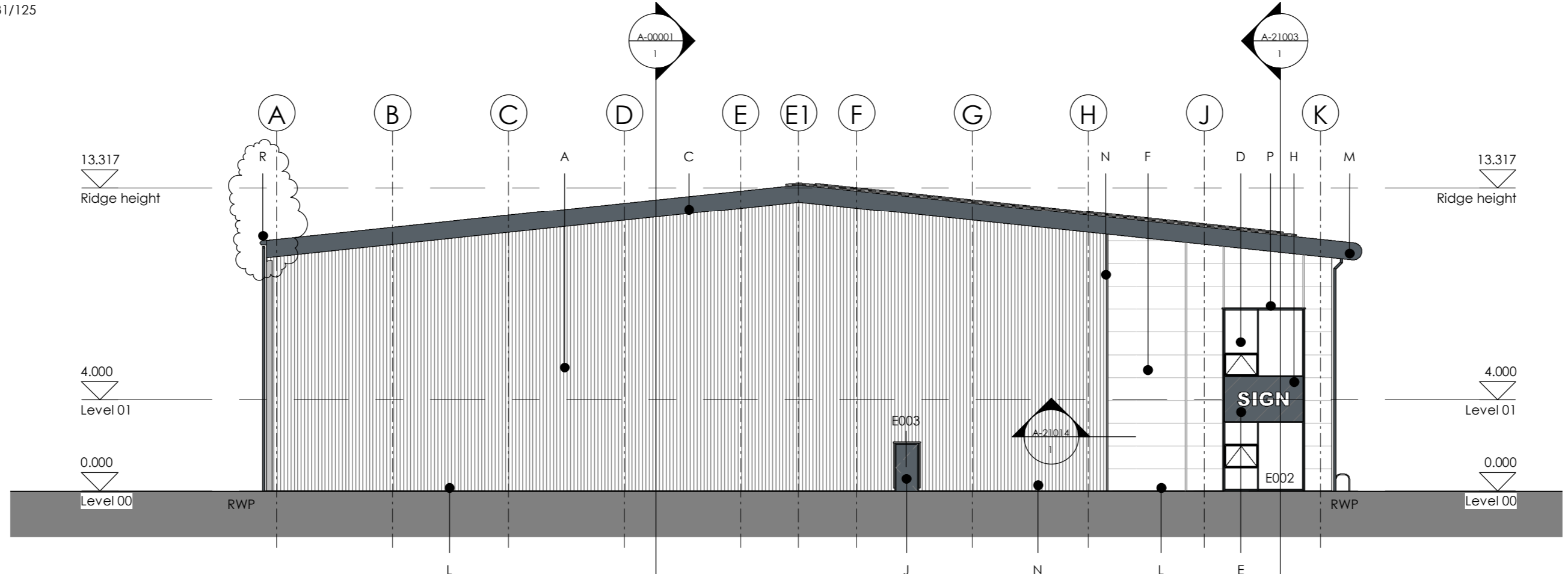
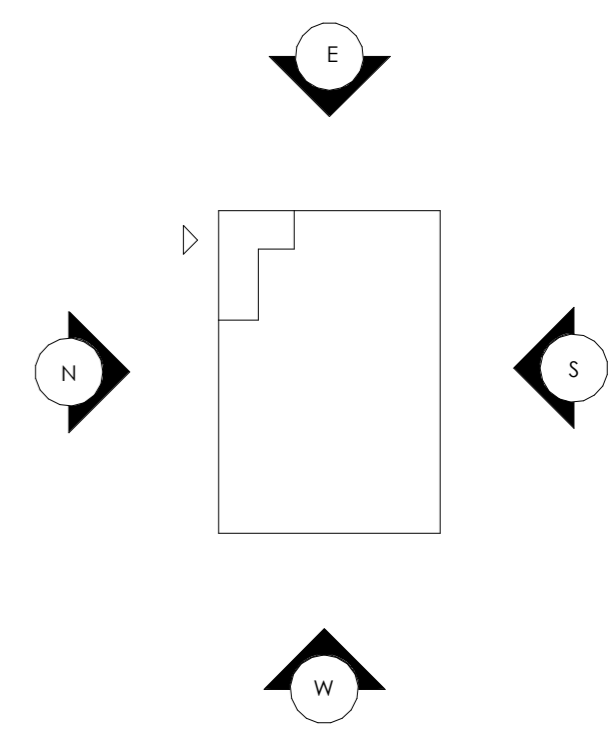
EXTERNAL OPENINGS TO BE READ IN CONJUNCTION WITH EXTERNAL OPENING SCHEDULE A-31000

OPENING VENT REQUIREMENTS TBC BY M+E ENGINEER

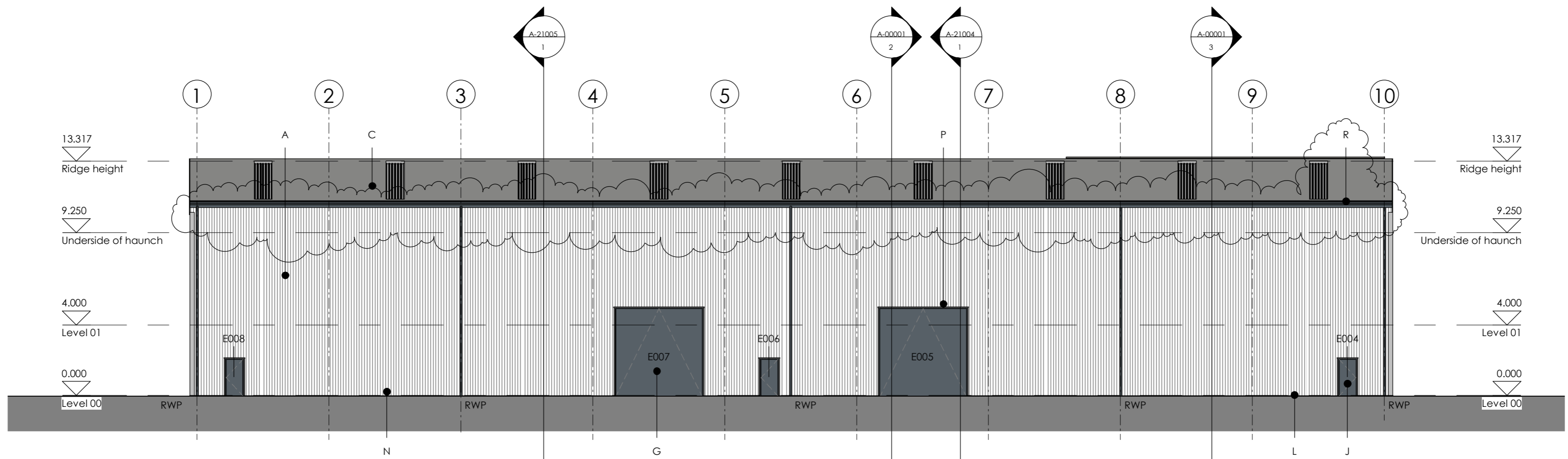
RAINFALL OUTLETS, GUTTER SIZING AND AMOUNT OF OUTLETS TO BE CONFIRMED BY SUB CONTRACTOR

REFER TO ROOF PLAN FOR SAFE ACCESS WALKWAYS AND MANSAFE FOR MAINTENANCE OF PHOTOVOLTAIC PANELS

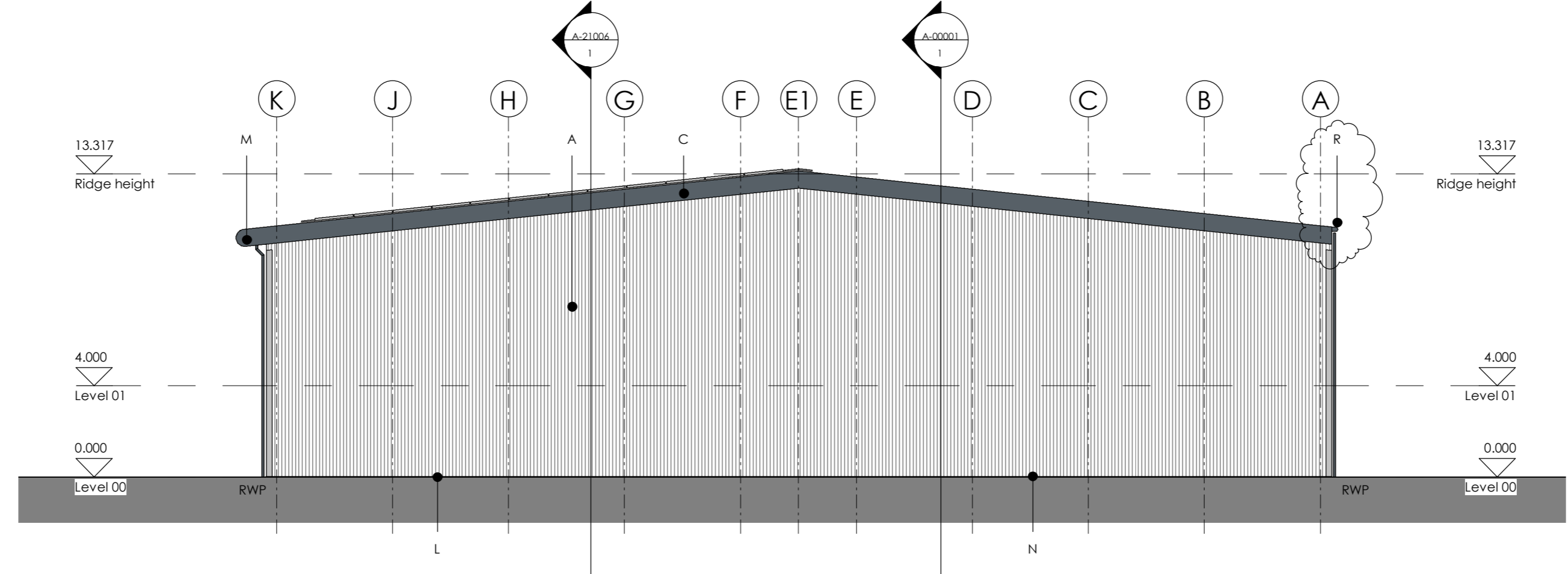
*** FIRE RATED CLADDING REQUIRED TO ELEVATIONS ON GLS 1 AND 10. REFER TO SPECIFICATIONS H31 124 AND H43/124**



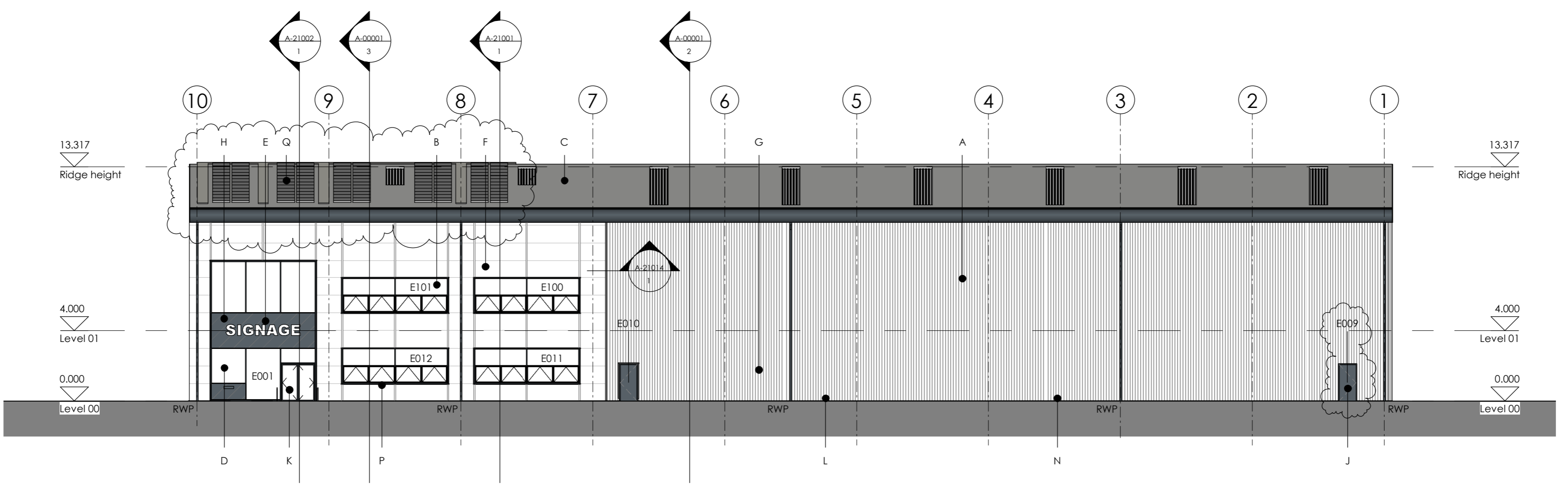
GA East Elevation - FIRE RATED CLADDING
1:200



GA South Elevation
1:200



GA West Elevation - FIRE RATED CLADDING
1:200



GA North Elevation
1:200



Rev	Date	Revision Notes	Drawn By	Checked By
T2	27.08.21	EXTERNAL OPENING TAGS ADDED, CLADDING PANELS ARRANGED TO MODULES	DW	SMC
C1	23.08.22	VE; BULLNOSE TO SOUTH ELEVATION REPLACED WITH TRUE-LINE; DOOR E009 RELOCATED TO SUIT REMOVAL OF EXTERNAL FOOTPATHS; FVS RELOCATED; REDUCED TO 25%. LEGEND UPDATED; BASE COMPOSITE CLADDING CORRECTED TO 1000mm PANEL; CLADDING BASE LEVEL REDUCED	DW	SMC

Rev	Date	Revision Notes	Drawn By	Checked By

Drawing Status: CONSTRUCTION		Submittal:	Drawing No: 3533-FBA-00-XX-DR-A-00051	Rev: C1
Job Title: EIGHTH AVENUE EAST		Job No: 3533	© Drawing & Design Copyright of:	
Drawing Title: GA Elevations		FAULKNERBROWNS ARCHITECTS 		
Date: 2021 AUG	Scale: 1:200			

Do not scale this drawing. Do not derive dimensions from digital media.

Faulkner Browns LLP
 Deason House
 Northumbrian Way
 Kingsworth
 Newcastle upon Tyne
 NE12 6QW
 T: 440191 2683007
 F: 440191 2478132